

Gaiter Pattern.

Materials needed: Olive Green Denim (some people use Tan also), Matching thread, brass grommets and tools to punch the holes (if you don't like to do the grommets you can use button holes or Velcro...most pictures show them as being laced up). Also cotton quilt batting (Brand: Warm and Natural) Poly batting is too thick. Also having Dritz sewing adhesive is a great help! Olive green shoelaces at least 36" long.

INDIVIDUAL SIZING:

These are meant to fit average individuals, being baggy bottom (around the ankle) but right fitting around the calf. To measure yourself to fit these, wear a pair of boots and heavy pants, start at the top of your boot and measure 10 inches up from that point. At that ten inch mark, measure around your calf. That is the measurement width of your FINISHED piece. Add ½ inch on each side for seam allowance.

Once you have this measurement you can customize this gaiter pattern to fit anyone—always cut down or increase from the ends, not the center.

For each gaiter (not each pair) cut 2 of the main piece and the tongue. Cut one additional main piece out of the batting but make it ½" smaller in every direction.

Take one side of the main piece, spray it with the adhesive, and then lay the batting down on top of it. This will secure the batting while you are sewing so that there is no moving or wrinkling.

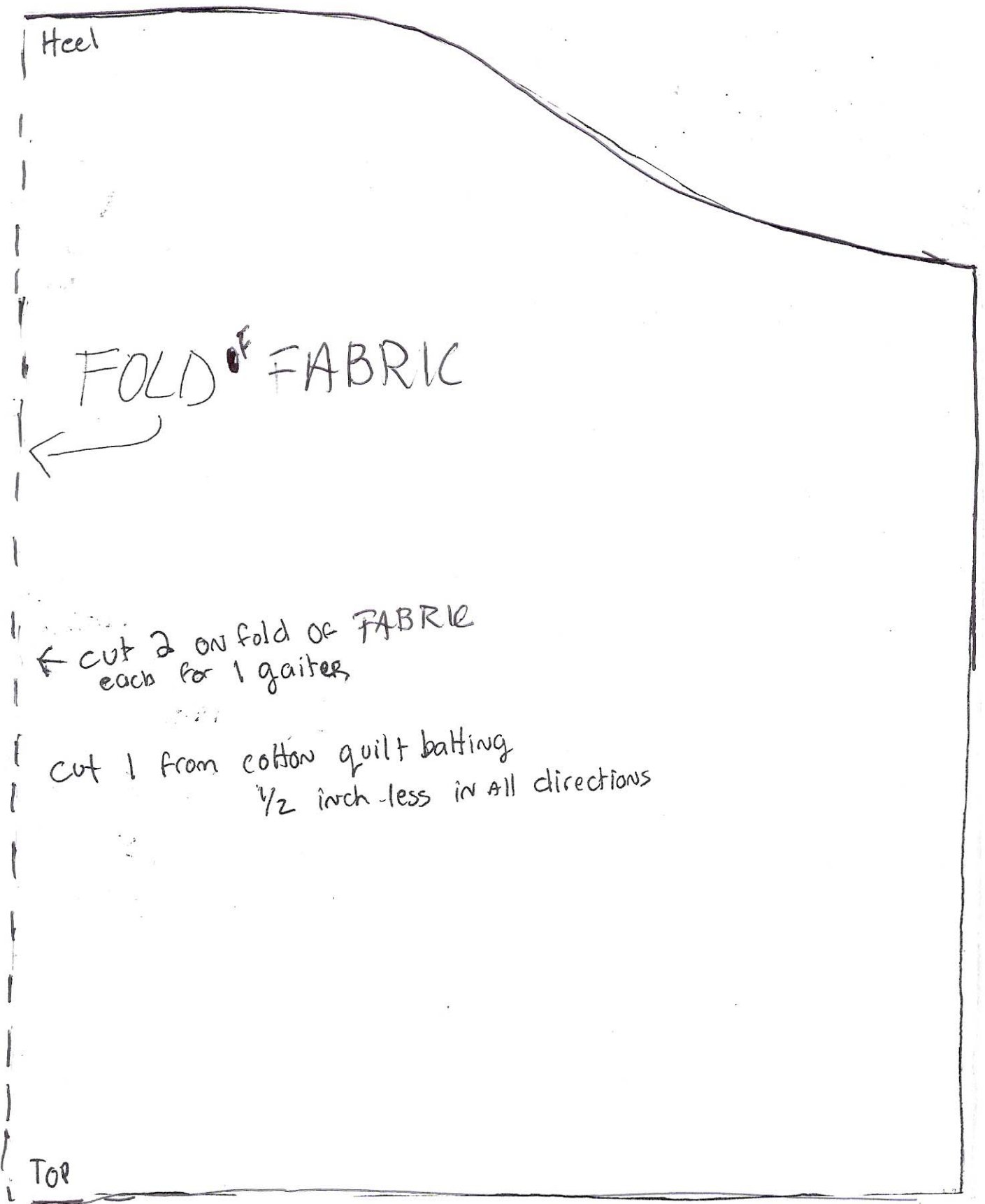
Pin the other main piece—right sides together to the piece that has the batting glued on. Sew from the bottom right edge, over the curve, and down the other straight side. Leave the bottom long straight edge open. Now, turn this piece right side out so that the batting is now inside.

Turn in the bottom edge and hem closed with 1/8 inch edging. Also edge sew the other three sides the same way. Down the exact center of the piece from the top of the curve to the bottom edge sew two lines to form the center "seam". This sews the batting in place and gives added stiffness in the back.

Sew the two tongue pieces together on 3 sides, turn right side out, hem the bottom and edge all three sides.

Then attach the tongue (sew or glue....glue didn't work for me) on one side of the gaiter about ¾ inch from the edge. This tongue acts just like one in a pair of shoes—it protects your leg from the laces and doesn't let your pants show or other gaps.

Now you are ready to punch the holes and put in the grommets, add the button holes or Velcro and you are ready to wear them.



The above pattern was shrunk on a copy machine so that I could fit it into my scanner. The original was copied at a setting of 80%. In order to get the above pattern at its full size, you will have to zoom the above pattern to 120%. If you can't find a copier with that capability, you may have to cut the above graphic in half and blow up each to 120% and then tape together.

gaiter tongue

cut two for each gaiter

Do not use batting.

This pattern piece is full size...no resizing is necessary.